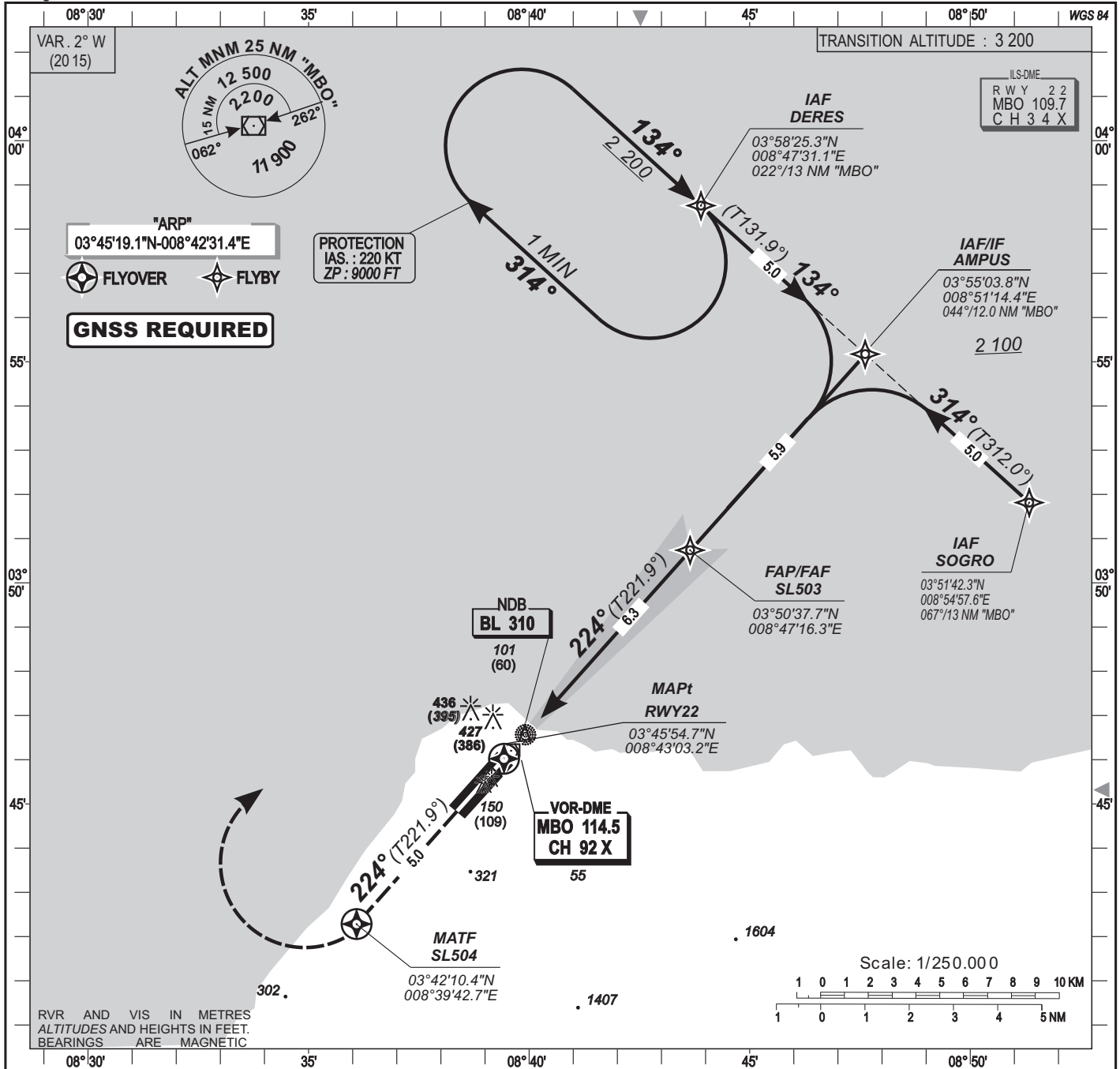
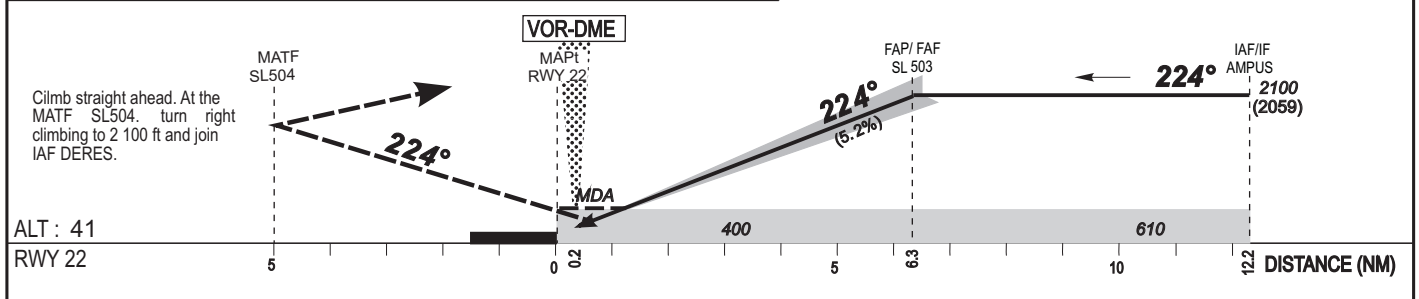


HEIGHTS RELATED TO THR 22 ELEVATION



Distance to THR22 (NM)	FAP/FAF	6	5	4	3	2
Altitude (ft)	2 100	2000	1685	1365	1045	730



CAT	Cat. 1				LOC				CIRCLING (3)				RVR for take-off CAT A - B - C : 400 CAT D : 400	
	OCA (OCH)	DA	DH	RVR(1)	RVR(2)	OCA (OCH)	MDA	MDH	RVR(1)	RVR(2)	OCA (OCH)	MDA		MDH
A	280 (239)	280 (240)		600	1000	396 (355)	400 (360)		900	1500	731 (655)	740 (660)		1500
B	292 (251)	300 (260)		650	1200	396 (355)	400 (360)		1000	1500	731 (655)	740 (660)		1600
C	300 (259)	300 (260)		650	1200	396 (355)	400 (360)		1000	1800	830 (754)	830 (760)		2400
D	311 (270)	320 (270)		650	1200	396 (355)	400 (360)		1400	2000	830 (754)	830 (760)		3600

Notes: (1) With approach lights - (2) Without approach lights - (3) Daytime only -OCH and MDH AAL.
 (3) At the North-Est of the field - Daytime only.
 - Climbing sector after take-off: between radials 224° and 313° BIS.
 - Minimum temperature: 15°C.

PROCEDURE TO BE USED ACCORDING TO AIC NR 02/A/2002 DAKAR - 21 MARCH 2002

Timing		FAP-FAF /THR 6.3 NM	
KT	MIN SEC	KT	MIN SEC
90	4 Min 12	140	2 Min 42
100	3 Min 47	150	2 Min 31
110	3 Min 27	160	2 Min 22
120	3 Min 09	170	2 Min 14
130	2 Min 55	180	2 Min 06

AMDT 12/18 : NORMALIZATION